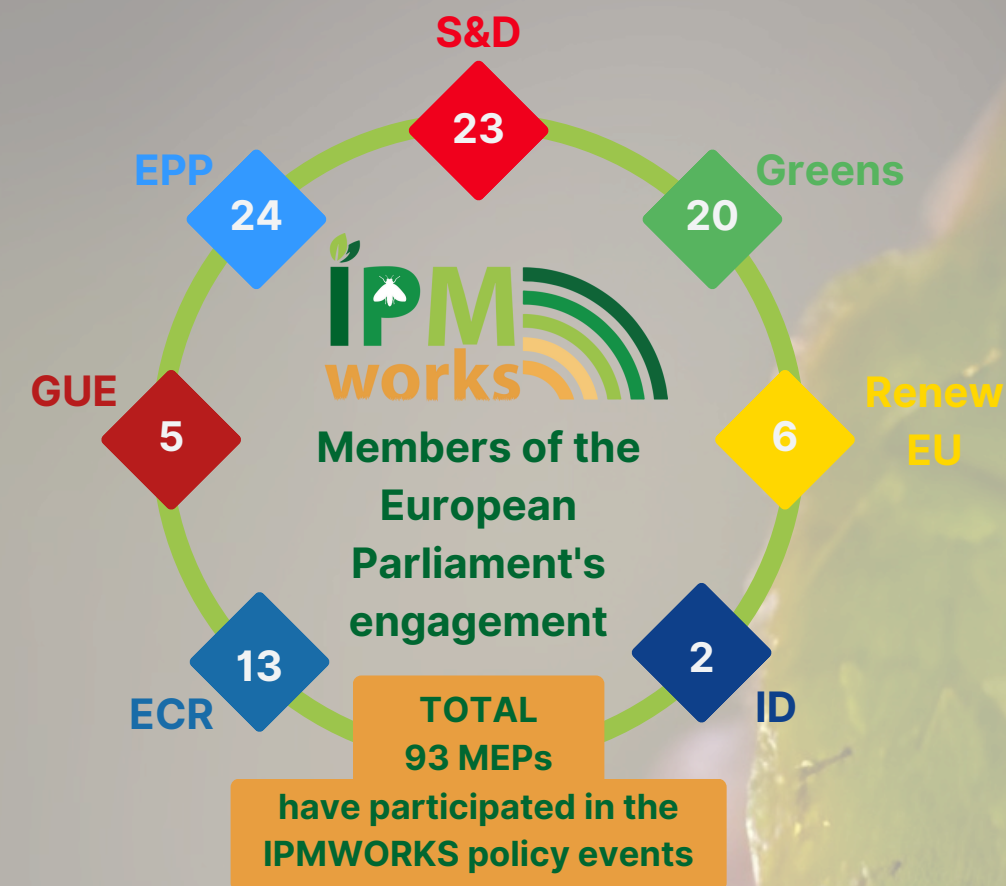


# IPMWORKS Policy Engagement



S&D: Progressive Alliance of Socialists and Democrats  
 Greens: Greens / European Free Alliance  
 EPP: European People's Party  
 GUE: The Left  
 Renew EU: Renew Europe  
 ECR: European Conservatives and Reformists  
 ID: Identity and Democracy



[www.ipmworks.net](http://www.ipmworks.net)

IPMWORKS is a FarmDemo aligned project and is partnered with the IPM Decisions Project



THIS PROJECT HAS RECEIVED FUNDING FROM THE EUROPEAN UNION' HORIZON 2020 RESEARCH AND INNOVATION PROGRAMME UNDER GRANT AGREEMENT N. 101000339

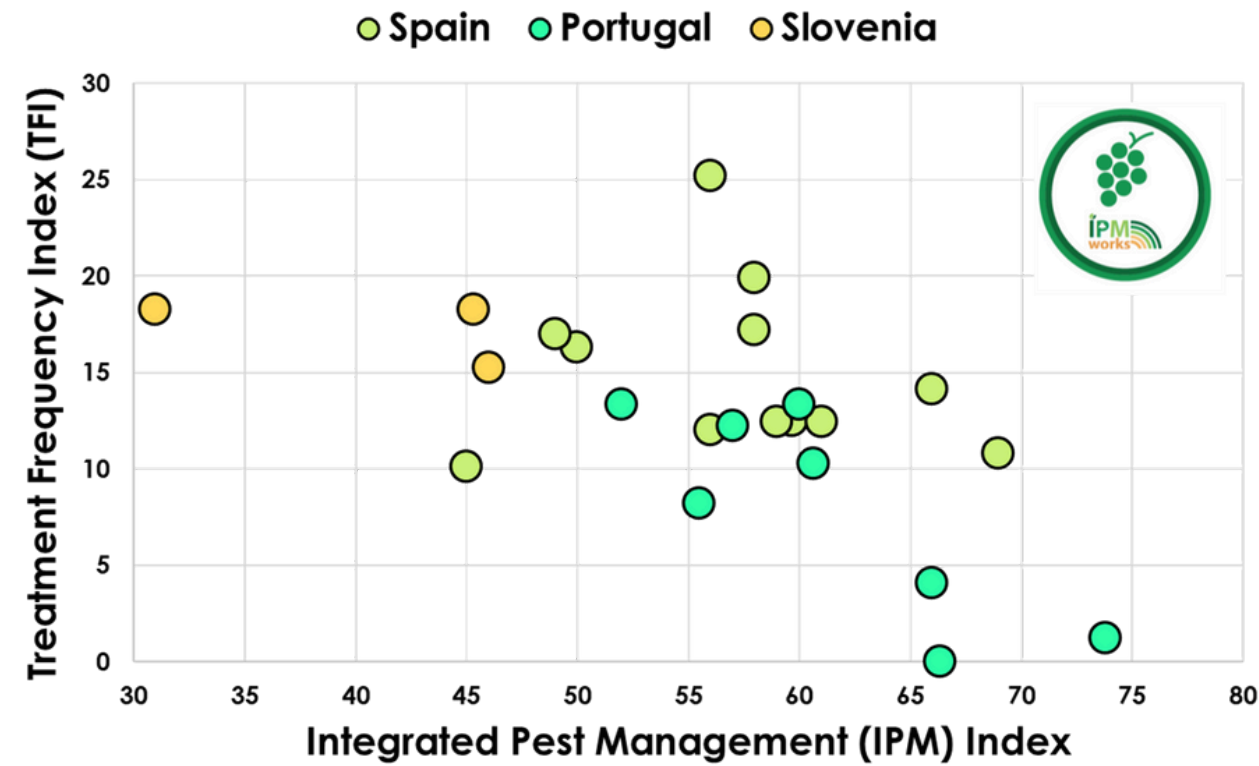
The sole responsibility for the content lies with the authors. It does not necessarily reflect the opinion of the European Union. Neither REA nor the European Commission are responsible for any use that may be made of the information contained therein.



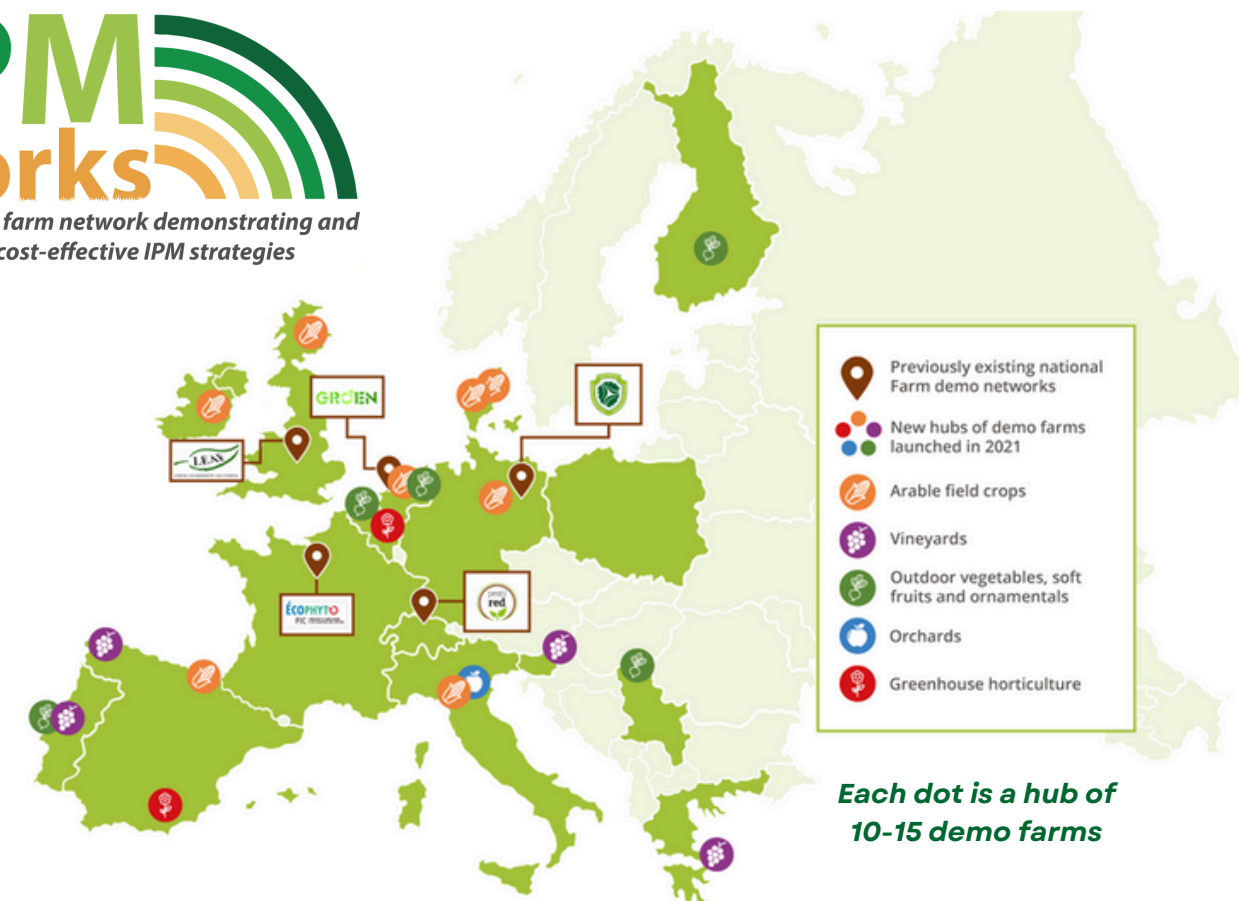
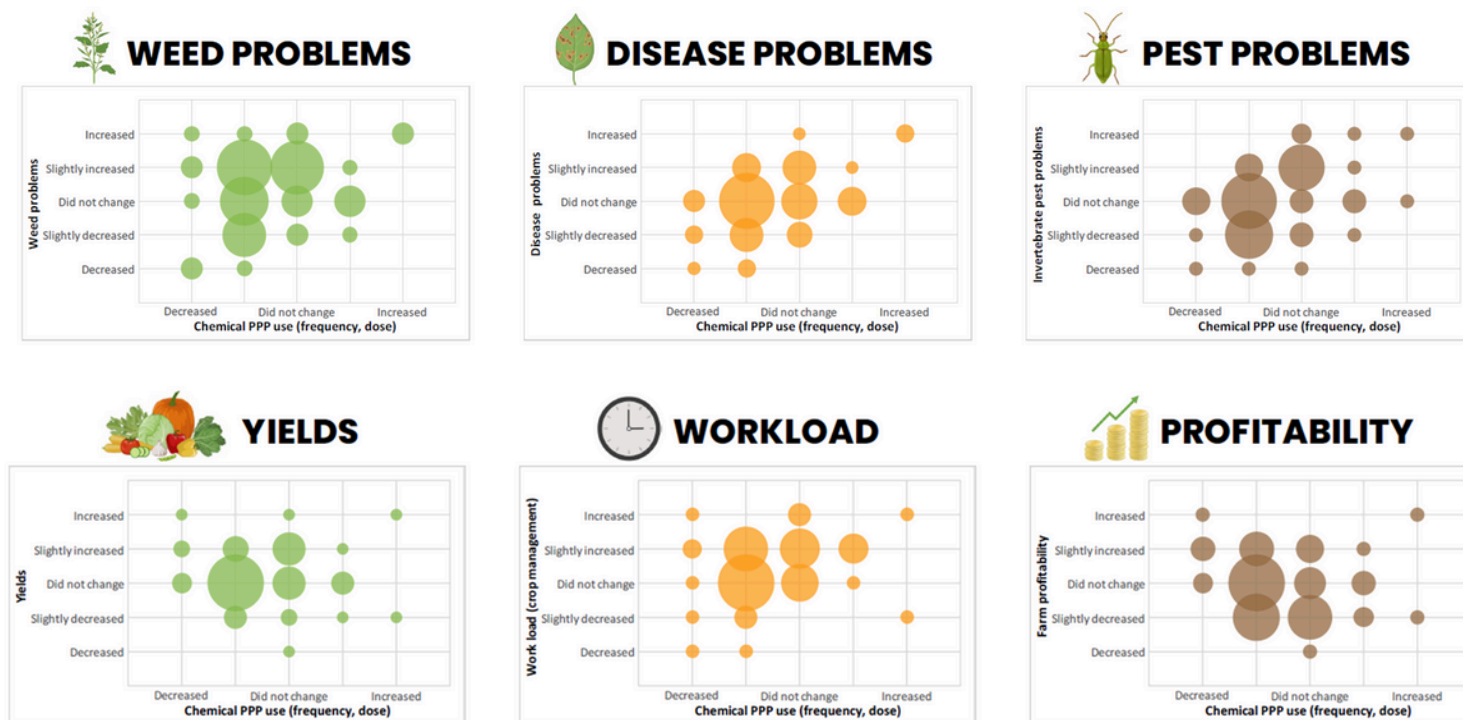
*An EU-wide farm network demonstrating and promoting cost-effective IPM strategies*



# Project Results



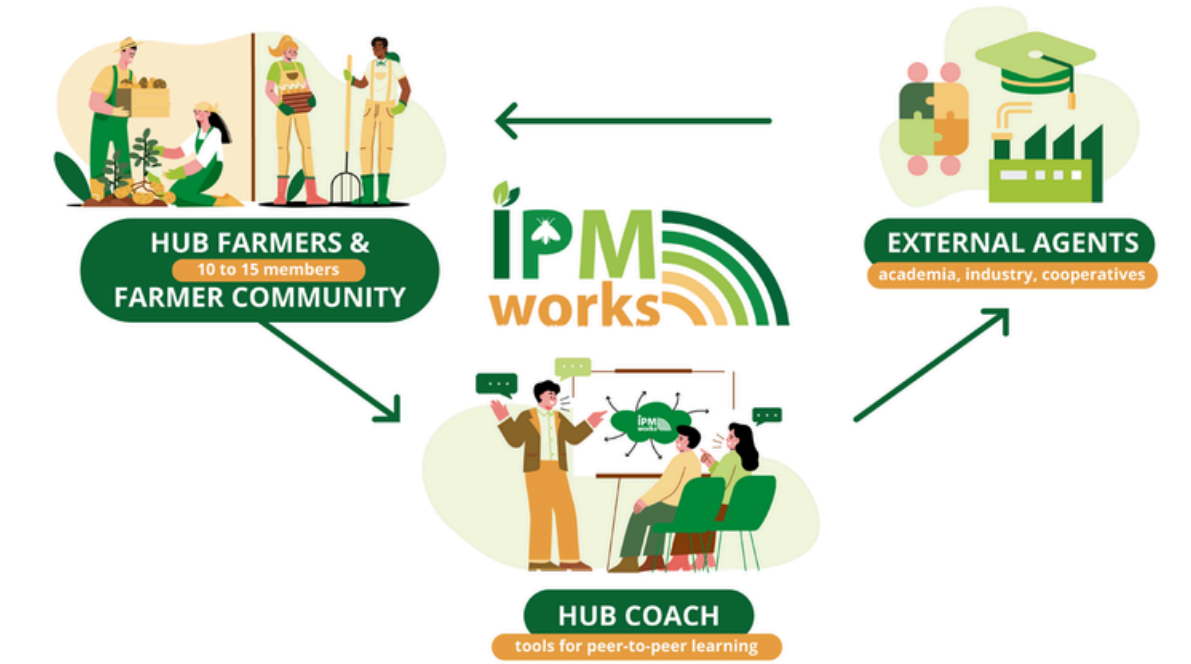
Data collected in IPMWORKS demo farms, both qualitative and quantitative, provide evidences that IPM indeed 'works'. Combining several IPM-based measures, as quantified by an index of IPM adoption, is negatively correlated with PPP inputs (quantified through the Treatment Frequency Index see graph above for vineyards). Many IPMWORKS farmers succeeded in reducing further PPP inputs during the course of the project, without increasing pest problems, without affecting yields, and without affecting profitability (see graph below for arable fields). When profitability could be assessed for several farms of the same sector/region, it was not correlated with the intensity of PPP use.



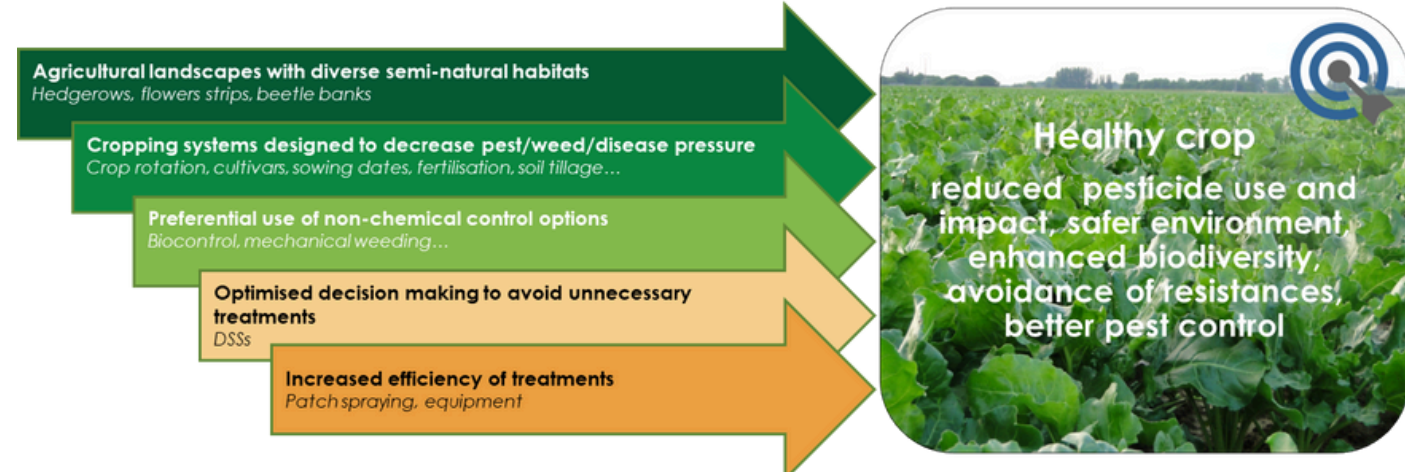
# IPMWORKS Policy recommendations

## Holistic IPM

1. Holistic IPM needs continuous innovation
2. Holistic IPM needs mitigating farmers' risk aversion
3. IPM needs tailoring to local conditions of each farm/sector
4. Adoption of Holistic IPM is facilitated by networking



## The 5 pillars of Holistic IPM



## IPM demo networks

1. Peer-to-peer learning in IPM demo hubs WORKS
2. Hub coaches make demo hubs WORK
3. Seeing how IPM WORKS in a real-life setting WORKS
4. International exchange on IPM WORKS
5. IPM demo hubs can make policy WORK

For more info visit <https://ipmworks.net/>